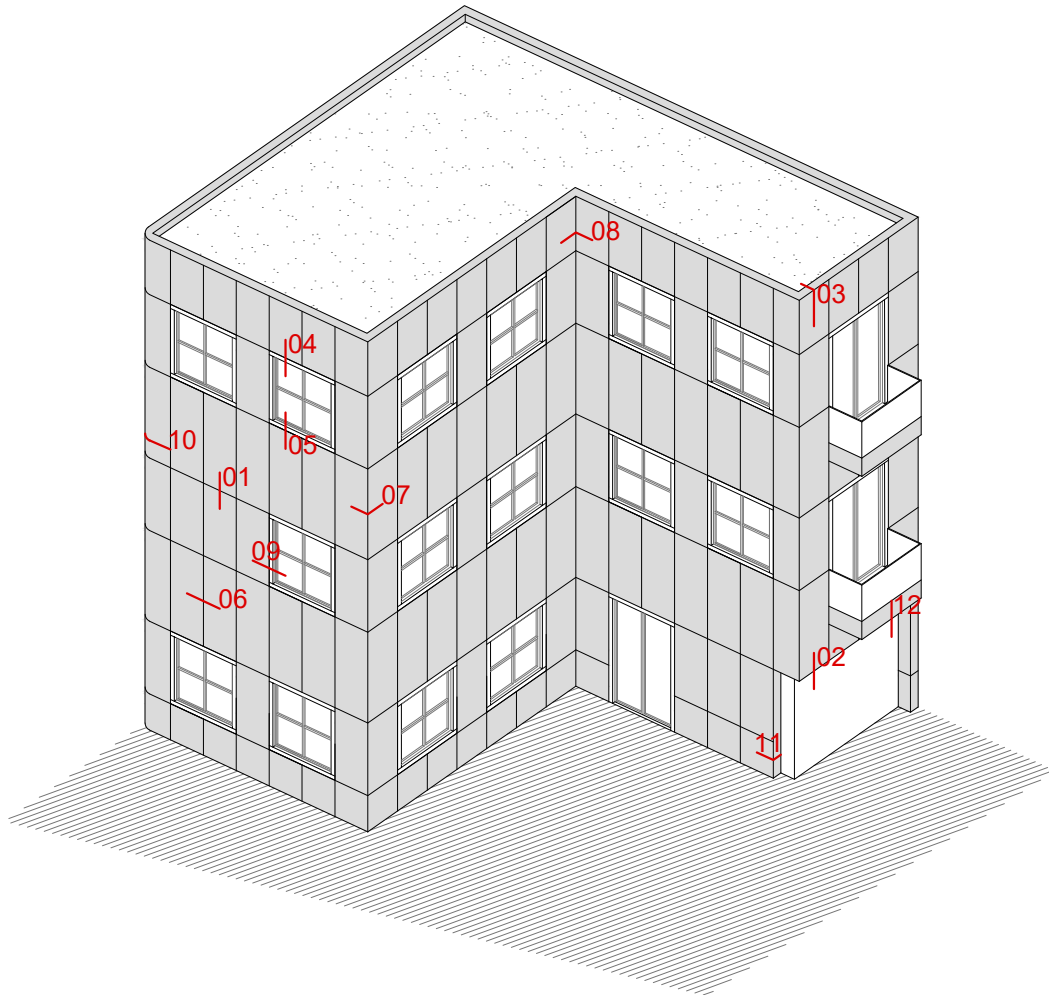


Any unauthorised reproduction, distribution, public communication and/or transformation of this document constitutes a copyright violation.

STAC® is not responsible for its use which is, in any case, intended for evaluation by technically skilled persons, and it is subject to their own discretion and risk.

This information is for conceptual use only, and it may change.



1 VERTICAL SECTION **HORIZONTAL JOINT**

2 VERTICAL SECTION **LOWER CLADDING END**

3 VERTICAL SECTION **PARAPET RETURN**

4 VERTICAL SECTION **WINDOW HEAD**

5 VERTICAL SECTION **WINDOWS SILL**

6 HORIZONTAL SECTION **VERTICAL JOINT**

7 HORIZONTAL SECTION **OUTER CORNER**

8 HORIZONTAL SECTION **INNER CORNER**

9 HORIZONTAL SECTION **WINDOW JAMB**

10 HORIZONTAL SECTION **ROUNDED CORNER**

11 HORIZONTAL SECTION **LATERAL CLADDING END**

12 VERTICAL SECTION **CEILING**

REV 08/18

SYSTEM STB-CH45

CONSTRUCTION DETAILS

VERTICAL SECTION

HORIZONTAL JOINT

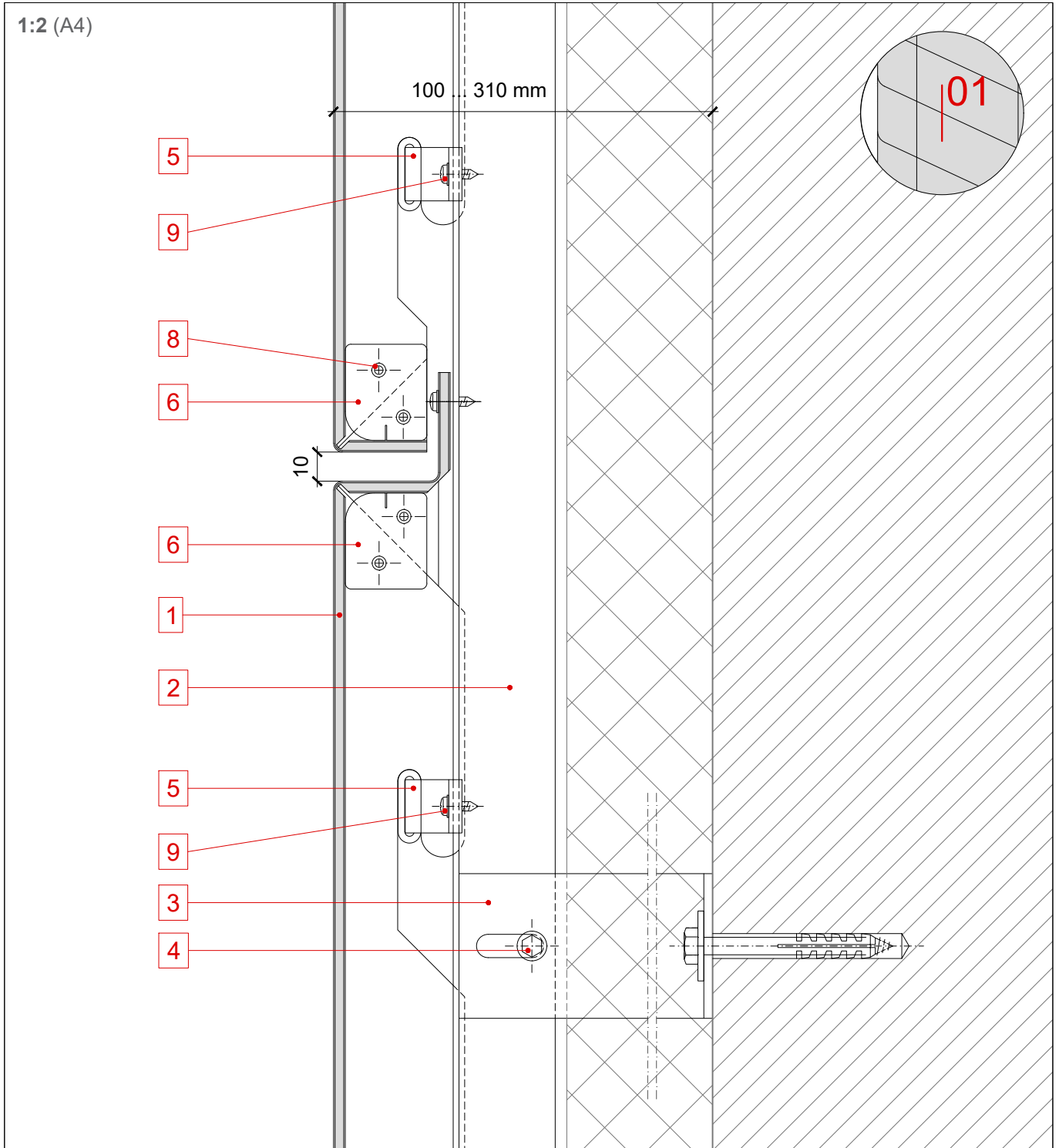
STAC BOND

CH45.01.01

Any unauthorised reproduction, distribution, public communication and/or transformation of this document constitutes a copyright violation.

STAC® is not responsible for its use which is, in any case, intended for evaluation by technically skilled persons, and it is subject to their own discretion and risk.

This information is for conceptual use only, and it may change.



1 STACBOND panel cassette

2 Profile OMEGA

3 Spacer DOUBLE T

4 Through screw M 6 x 60/70

5 Bracket set external

6 Cassettes forming plate

7 Stiffener from STACBOND panel

8 Blind rivet

9 Self-drilling screw

10 Aluminium plate for fixing and riveting

11 Auxiliar profile

12 Water drainage folded sheet

13 Water drainage holes

REV 08/18

SYSTEM STB-CH45

CONSTRUCTION DETAILS

VERTICAL SECTION

LOWER CLADDING END

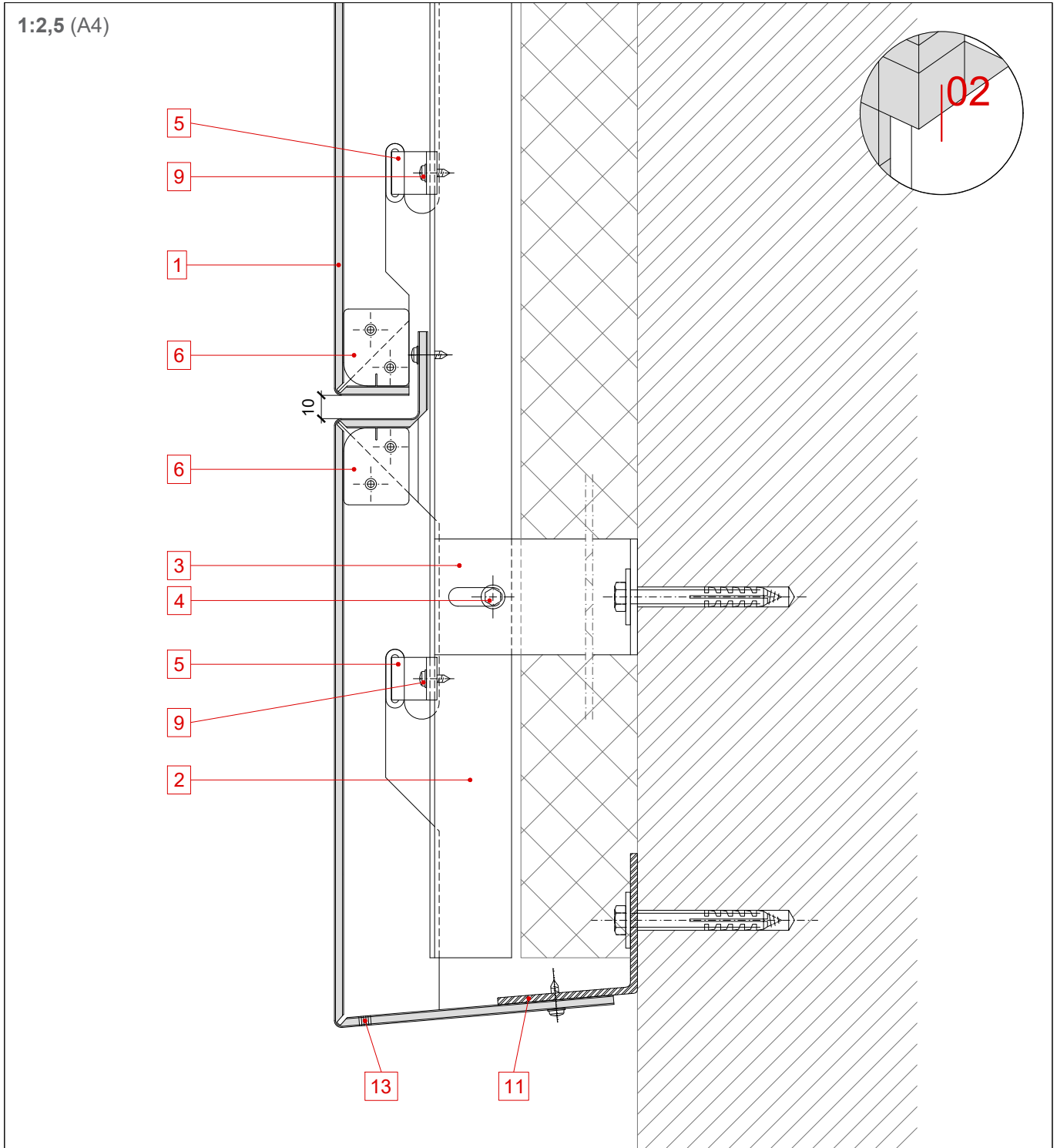
STAC BOND

CH45.02.01

Any unauthorised reproduction, distribution, public communication and/or transformation of this document constitutes a copyright violation.

STAC® is not responsible for its use which is, in any case, intended for evaluation by technically skilled persons, and it is subject to their own discretion and risk.

This information is for conceptual use only, and it may change.



1 STACBOND panel cassette

2 Profile OMEGA

3 Spacer DOUBLE T

4 Through screw M 6 x 60/70

5 Bracket set external

6 Cassettes forming plate

7 Stiffener from STACBOND panel

8 Blind rivet

9 Self-drilling screw

10 Aluminium plate for fixing and riveting

11 Auxiliar profile

12 Water drainage folded sheet

13 Water drainage holes

REV 08/18

SYSTEM STB-CH45

CONSTRUCTION DETAILS

VERTICAL SECTION

LOWER CLADDING END

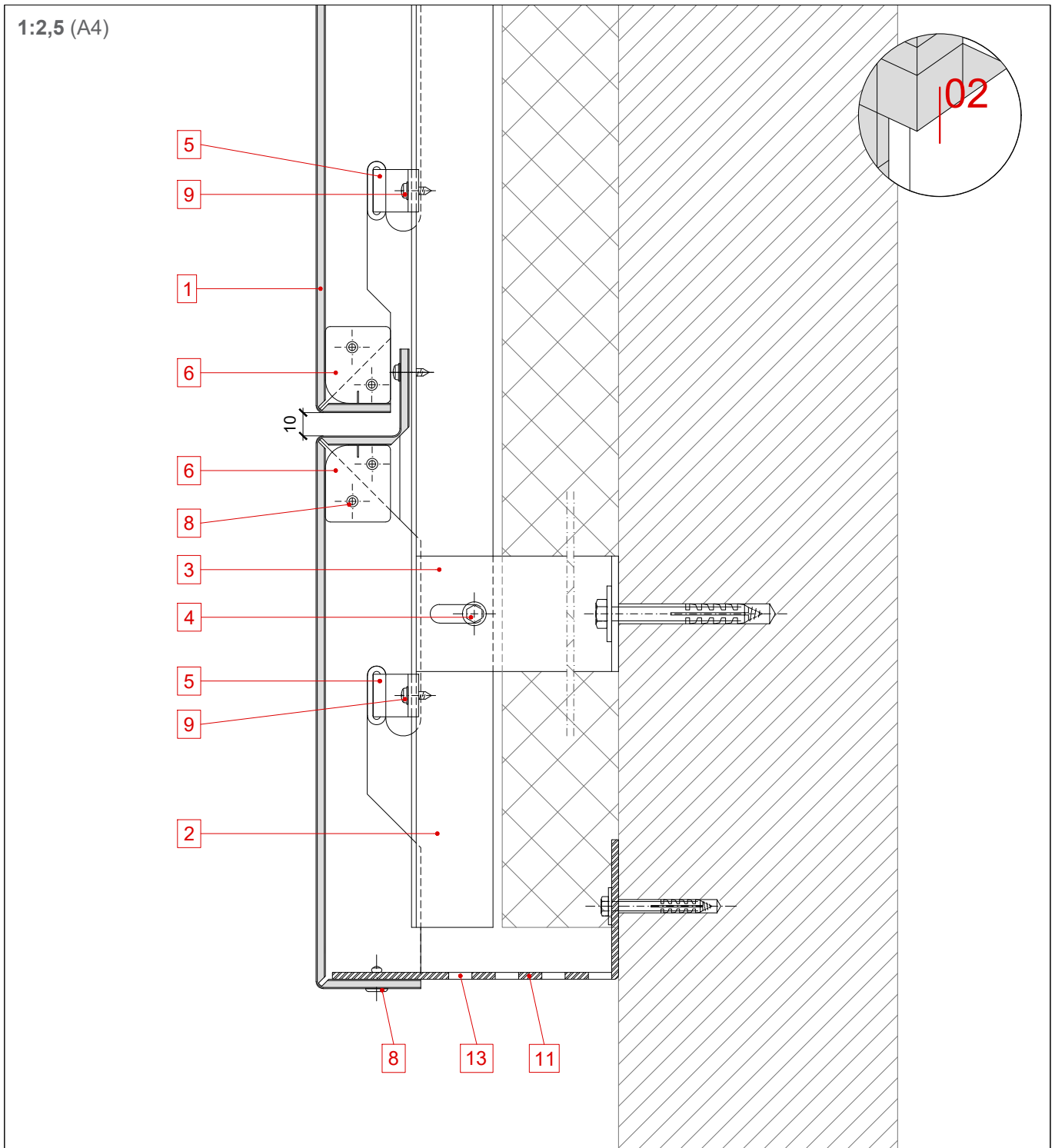
STAC BOND

CH45.02.02

Any unauthorised reproduction, distribution, public communication and/or transformation of this document constitutes a copyright violation.

STAC® is not responsible for its use which is, in any case, intended for evaluation by technically skilled persons, and it is subject to their own discretion and risk.

This information is for conceptual use only, and it may change.



1 STACBOND panel cassette

2 Profile OMEGA

3 Spacer DOUBLE T

4 Through screw M 6 x 60/70

5 Bracket set external

6 Cassettes forming plate

7 Stiffener from STACBOND panel

8 Blind rivet

9 Self-drilling screw

10 Aluminium plate for fixing and riveting

11 Auxiliar profile

12 Water drainage folded sheet

13 Water drainage holes

REV 08/18

SYSTEM STB-CH45

CONSTRUCTION DETAILS

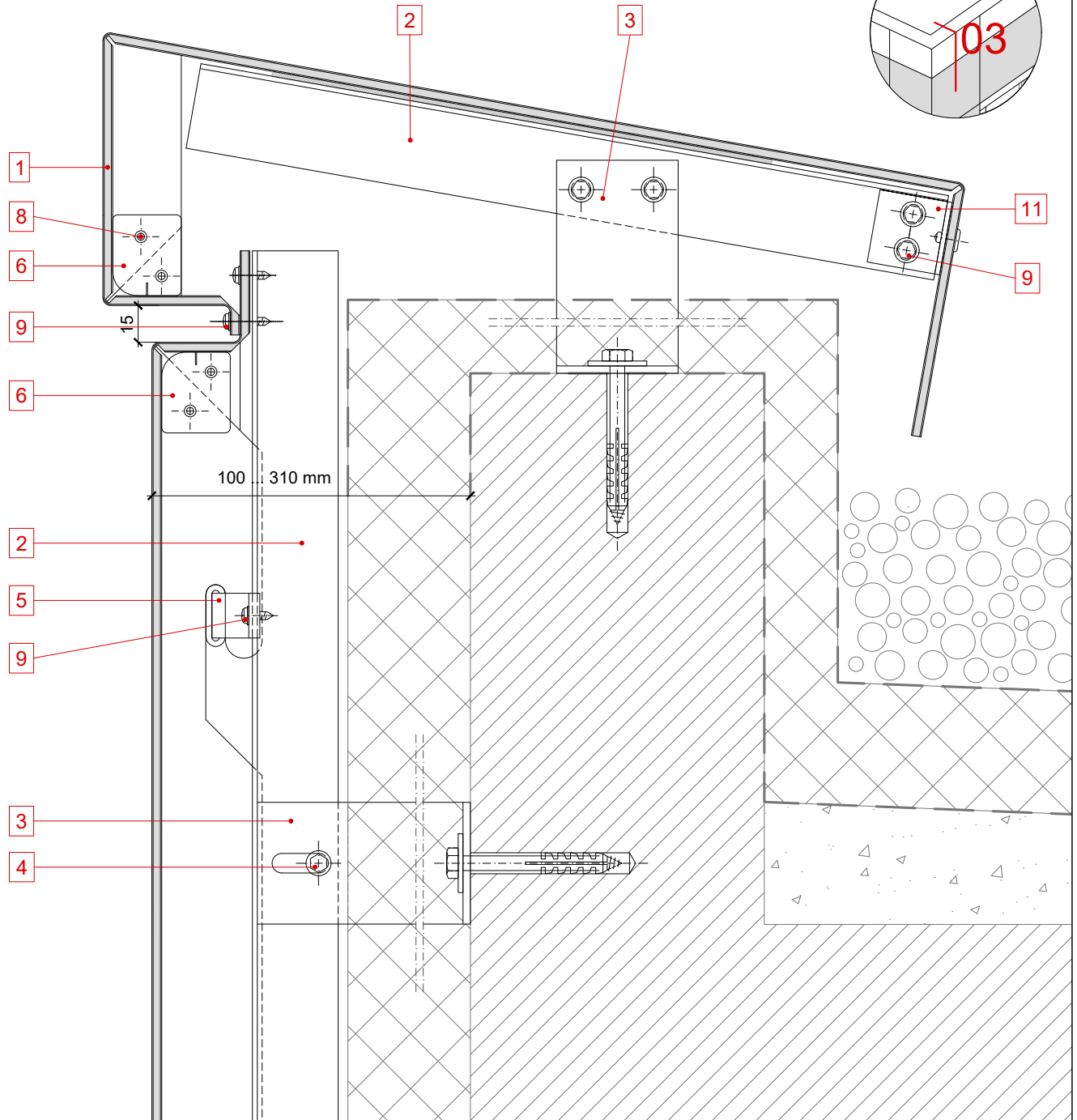
VERTICAL SECTION

PARAPET RETURN

STAC BOND

CH45.03.01

1:2,5 (A4)



1 STACBOND panel cassette

2 Profile OMEGA

3 Spacer DOUBLE T

4 Through screw M 6 x 60/70

5 Bracket set external

6 Cassettes forming plate

7 Stiffener from STACBOND panel

8 Blind rivet

9 Self-drilling screw

10 Aluminium plate for fixing and riveting

11 Auxiliar profile

12 Water drainage folded sheet

13 Water drainage holes

REV 08/18

SYSTEM STB-CH45

CONSTRUCTION DETAILS

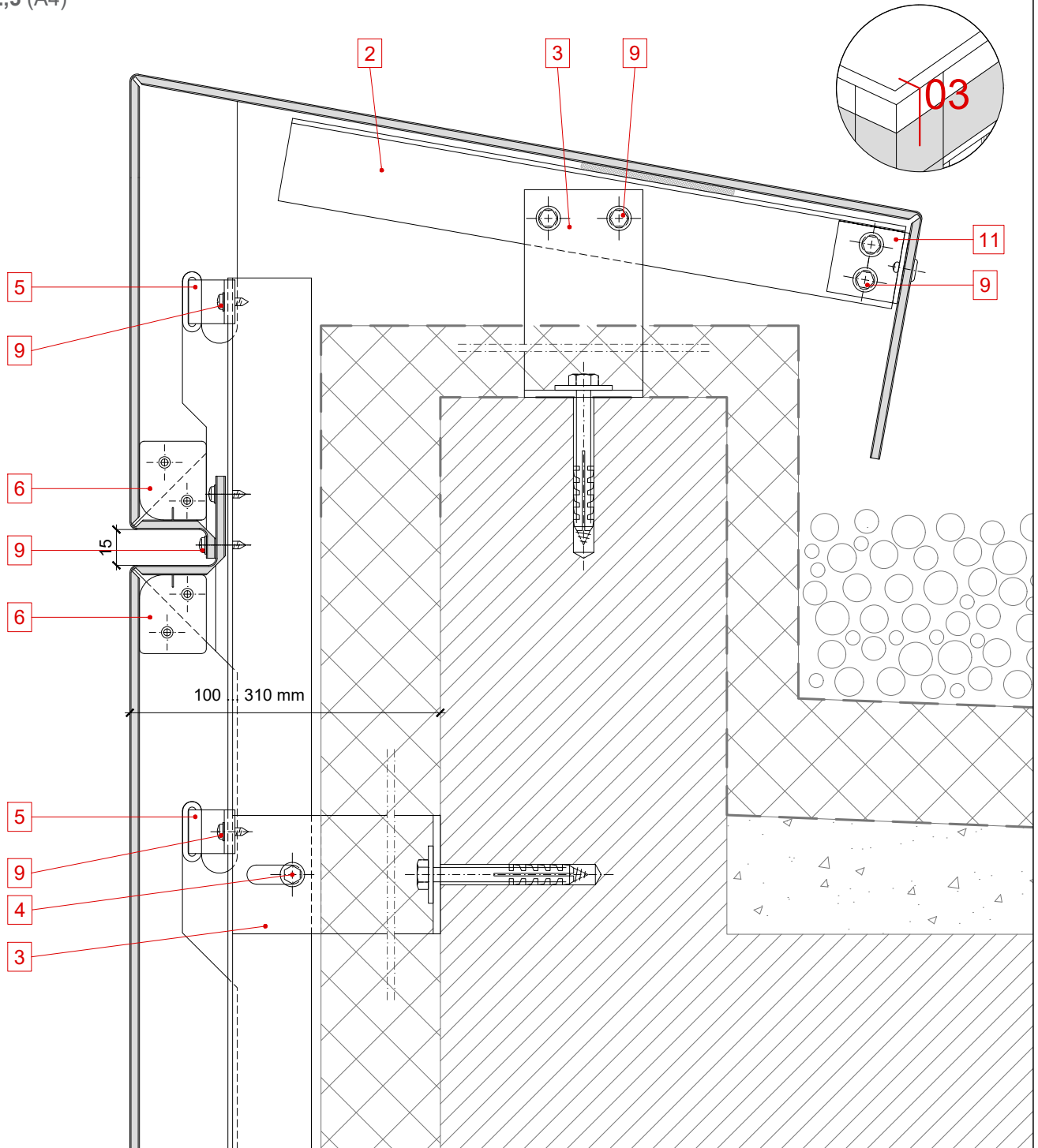
VERTICAL SECTION

PARAPET RETURN

STAC BOND

CH45.03.02

1:2,5 (A4)



1 STACBOND panel cassette

2 Profile OMEGA

3 Spacer DOUBLE T

4 Through screw M 6 x 60/70

5 Bracket set external

6 Cassettes forming plate

7 Stiffener from STACBOND panel

8 Blind rivet

9 Self-drilling screw

10 Aluminium plate for fixing and riveting

11 Auxiliar profile

12 Water drainage folded sheet

13 Water drainage holes

REV 08/18

SYSTEM STB-CH45

CONSTRUCTION DETAILS

VERTICAL SECTION

WINDOW HEAD

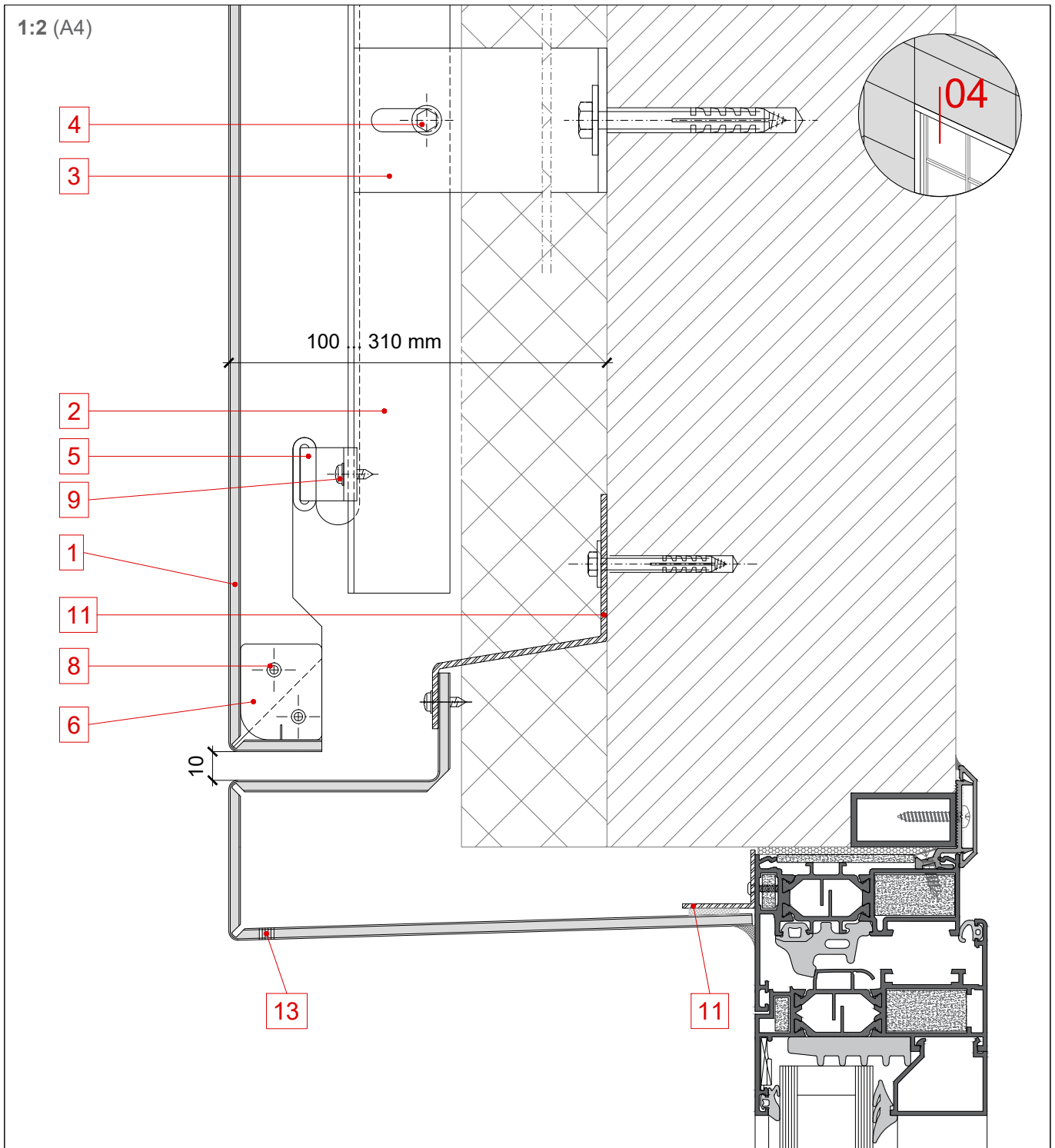
STAC BOND

CH45.04.01

Any unauthorised reproduction, distribution, public communication and/or transformation of this document constitutes a copyright violation.

STAC® is not responsible for its use which is, in any case, intended for evaluation by technically skilled persons, and it is subject to their own discretion and risk.

This information is for conceptual use only, and it may change.



1 **STACBOND** panel cassette

2 Profile OMEGA

3 Spacer DOUBLE T

4 Through screw M 6 x 60/70

5 Bracket set external

6 Cassettes forming plate

7 Stiffener from STACBOND panel

8 Blind rivet

9 Self-drilling screw

10 Aluminium plate for fixing and riveting

11 Auxiliar profile

12 Water drainage folded sheet

13 Water drainage holes

REV 08/18

SYSTEM STB-CH45

CONSTRUCTION DETAILS

VERTICAL SECTION

WINDOWS HEAD

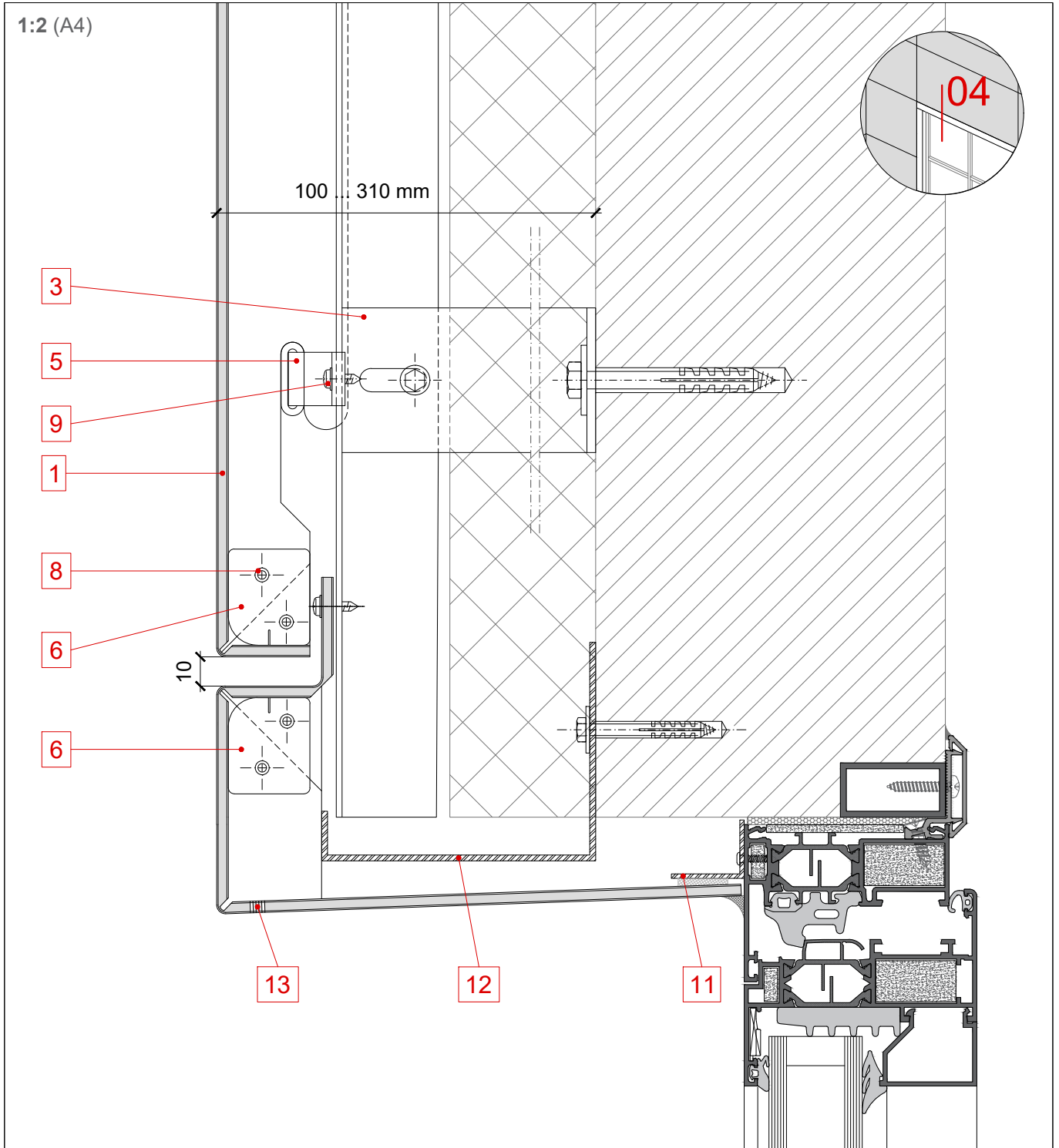
STAC BOND

CH45.04.02

Any unauthorised reproduction, distribution, public communication and/or transformation of this document constitutes a copyright violation.

STAC® is not responsible for its use which is, in any case, intended for evaluation by technically skilled persons, and it is subject to their own discretion and risk.

This information is for conceptual use only, and it may change.



1 **STACBOND** panel cassette

2 Profile OMEGA

3 Spacer DOUBLE T

4 Through screw M 6 x 60/70

5 Bracket set external

6 Cassettes forming plate

7 Stiffener from STACBOND panel

8 Blind rivet

9 Self-drilling screw

10 Aluminium plate for fixing and riveting

11 Auxiliar profile

12 Water drainage folded sheet

13 Water drainage holes

REV 08/18

SYSTEM STB-CH45

CONSTRUCTION DETAILS

VERTICAL SECTION

WINDOWS SILL

STAC BOND

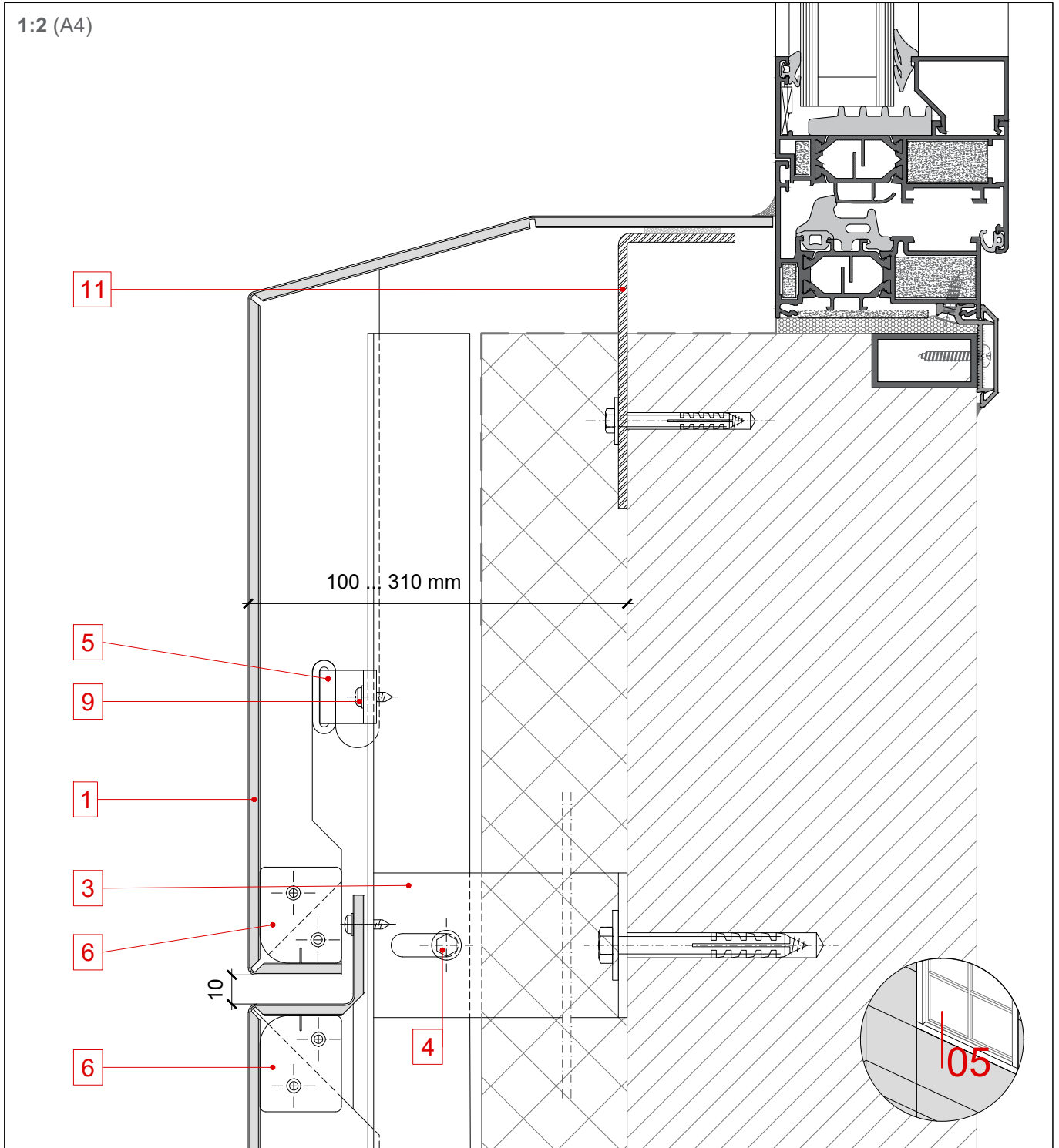
CH45.05.01

1:2 (A4)

Any unauthorised reproduction, distribution, public communication and/or transformation of this document constitutes a copyright violation.

STAC® is not responsible for its use which is, in any case, intended for evaluation by technically skilled persons, and it is subject to their own discretion and risk.

This information is for conceptual use only, and it may change.



1 STACBOND panel cassette

2 Profile OMEGA

3 Spacer DOUBLE T

4 Through screw M 6 x 60/70

5 Bracket set external

6 Cassettes forming plate

7 Stiffener from STACBOND panel

8 Blind rivet

9 Self-drilling screw

10 Aluminium plate for fixing and riveting

11 Auxiliar profile

12 Water drainage folded sheet

13 Water drainage holes

REV 08/18

SYSTEM STB-CH45

CONSTRUCTION DETAILS

VERTICAL SECTION

WINDOW SILL

STAC BOND

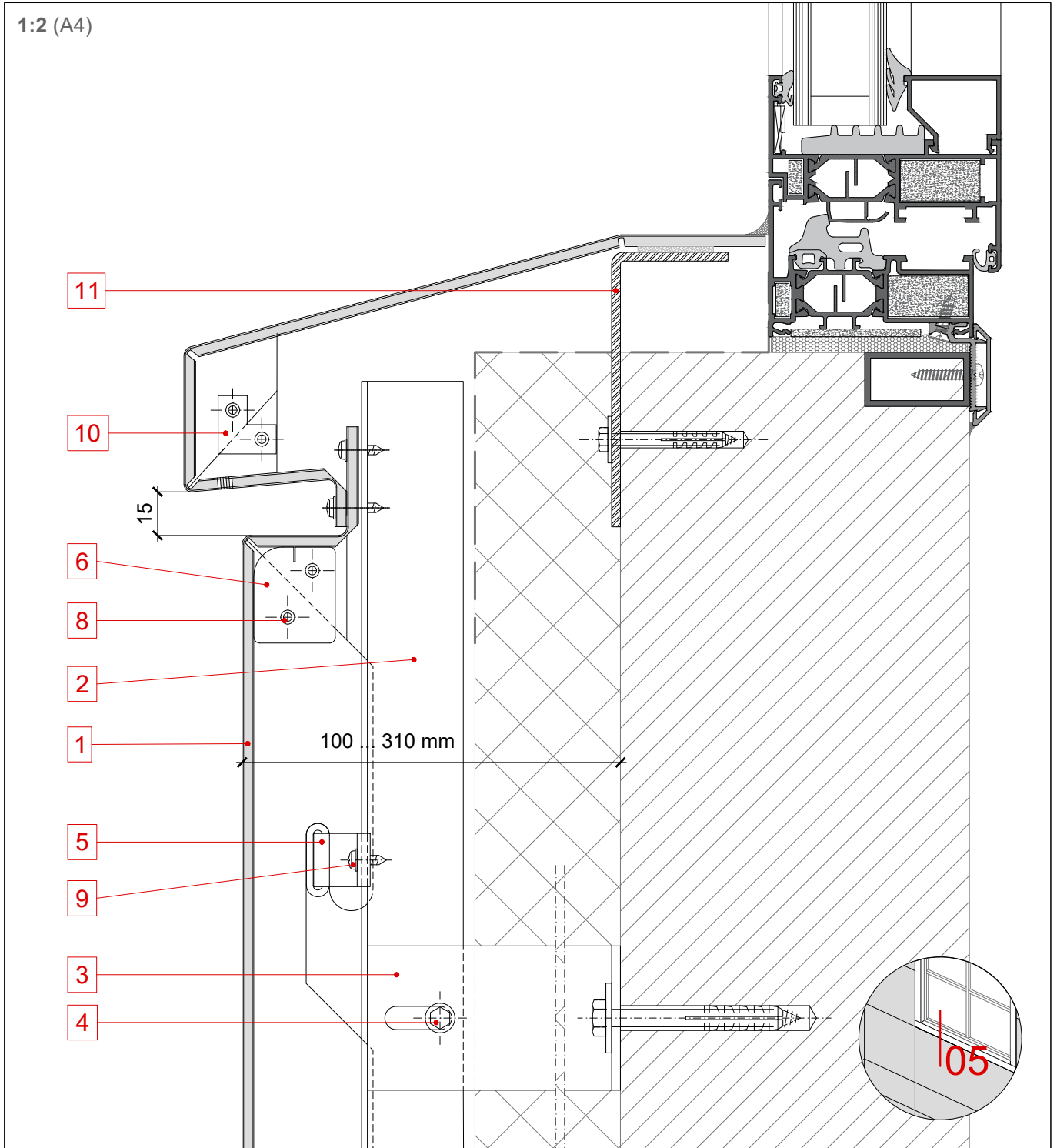
CH45.05.02

1:2 (A4)

Any unauthorised reproduction, distribution, public communication and/or transformation of this document constitutes a copyright violation.

STAC® is not responsible for its use which is, in any case, intended for evaluation by technically skilled persons, and it is subject to their own discretion and risk.

This information is for conceptual use only, and it may change.



1 STACBOND panel cassette

2 Profile OMEGA

3 Spacer DOUBLE T

4 Through screw M 6 x 60/70

5 Bracket set external

6 Cassettes forming plate

7 Stiffener from STACBOND panel

8 Blind rivet

9 Self-drilling screw

10 Aluminium plate for fixing and riveting

11 Auxiliar profile

12 Water drainage folded sheet

13 Water drainage holes

REV 08/18

SYSTEM STB-CH45

CONSTRUCTION DETAILS

VERTICAL SECTION

WINDOW SILL

STAC BOND

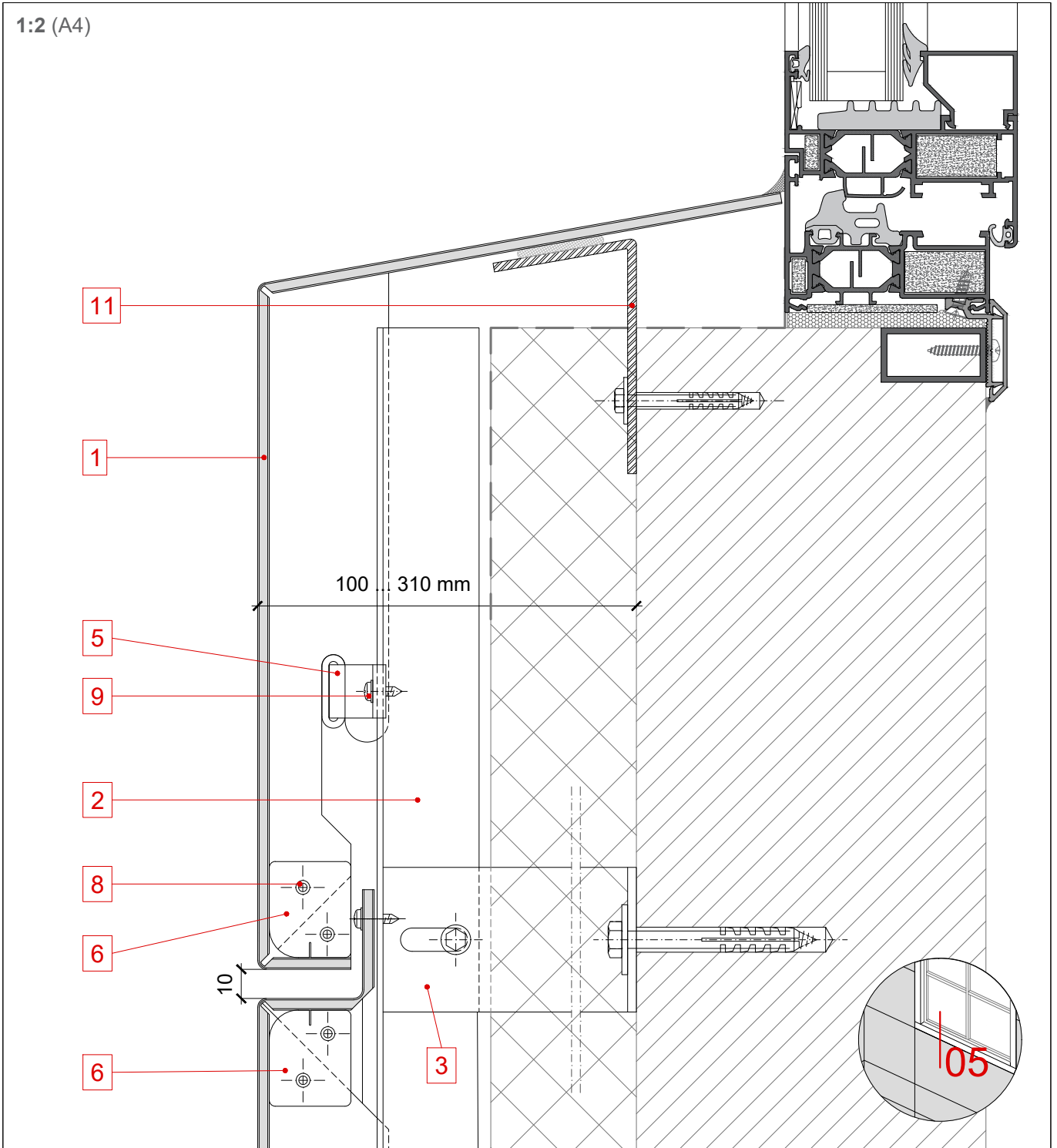
CH45.05.03

1:2 (A4)

Any unauthorised reproduction, distribution, public communication and/or transformation of this document constitutes a copyright violation.

STAC® is not responsible for its use which is, in any case, intended for evaluation by technically skilled persons, and it is subject to their own discretion and risk.

This information is for conceptual use only, and it may change.



1 **STACBOND** panel cassette

2 Profile OMEGA

3 Spacer DOUBLE T

4 Through screw M 6 x 60/70

5 Bracket set external

6 Cassettes forming plate

7 Stiffener from STACBOND panel

8 Blind rivet

9 Self-drilling screw

10 Aluminium plate for fixing and riveting

11 Auxiliar profile

12 Water drainage folded sheet

13 Water drainage holes

REV 08/18

SYSTEM STB-CH45

CONSTRUCTION DETAILS

HORIZONTAL SECTION

VERTICAL JOINT

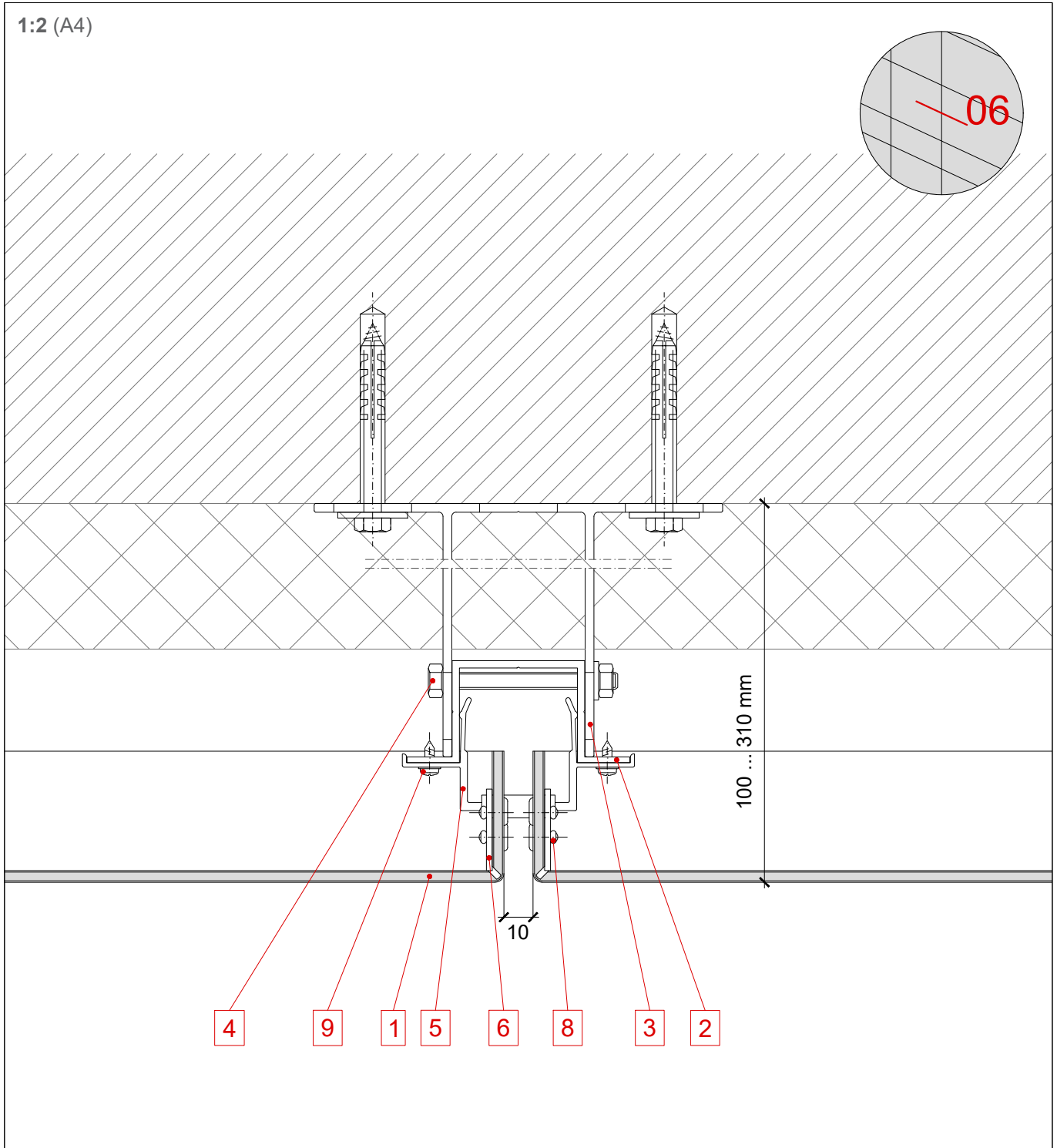
STAC BOND

CH45.06.01

Any unauthorised reproduction, distribution, public communication and/or transformation of this document constitutes a copyright violation.

STAC® is not responsible for its use which is, in any case, intended for evaluation by technically skilled persons, and it is subject to their own discretion and risk.

This information is for conceptual use only, and it may change.



1 STACBOND panel cassette

2 Profile OMEGA

3 Spacer DOUBLE T

4 Through screw M 6 x 60/70

5 Bracket set external

6 Cassettes forming plate

7 Stiffener from STACBOND panel

8 Blind rivet

9 Self-drilling screw

10 Aluminium plate for fixing and riveting

11 Auxiliar profile

12 Water drainage folded sheet

13 Water drainage holes

REV 08/18

SYSTEM STB-CH45

CONSTRUCTION DETAILS

HORIZONTAL SECTION

OUTER SECTION

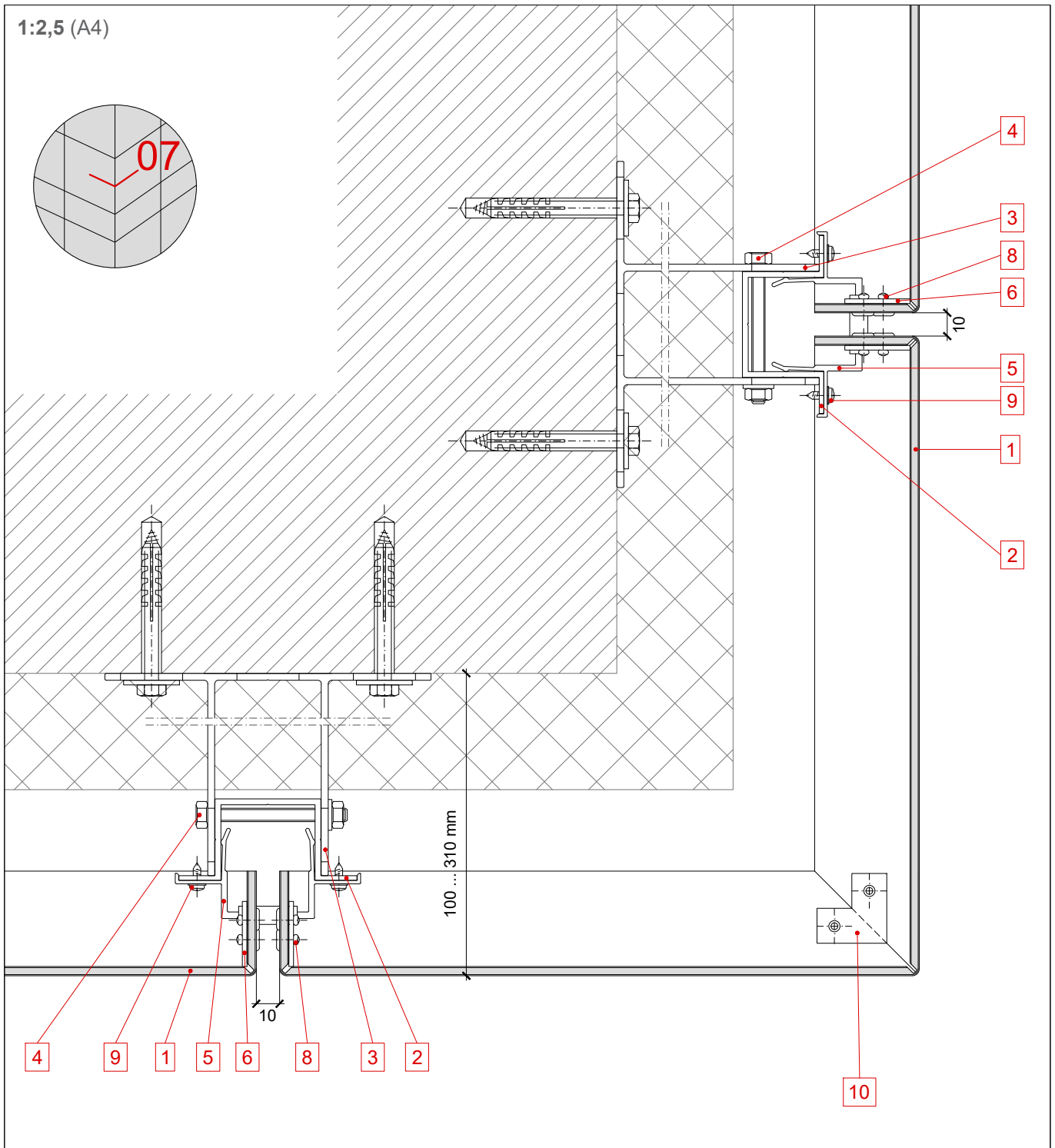
STAC BOND

CH45.07.01

Any unauthorised reproduction, distribution, public communication and/or transformation of this document constitutes a copyright violation.

STAC® is not responsible for its use which is, in any case, intended for evaluation by technically skilled persons, and it is subject to their own discretion and risk.

This information is for conceptual use only, and it may change.



1 STACBOND panel cassette

2 Profile OMEGA

3 Spacer DOUBLE T

4 Through screw M 6 x 60/70

5 Bracket set external

6 Cassettes forming plate

7 Stiffener from STACBOND panel

8 Blind rivet

9 Self-drilling screw

10 Aluminium plate for fixing and riveting

11 Auxiliar profile

12 Water drainage folded sheet

13 Water drainage holes

REV 08/18

SYSTEM STB-CH45

CONSTRUCTION DETAILS

HORIZONTAL SECTION

INNER CORNER

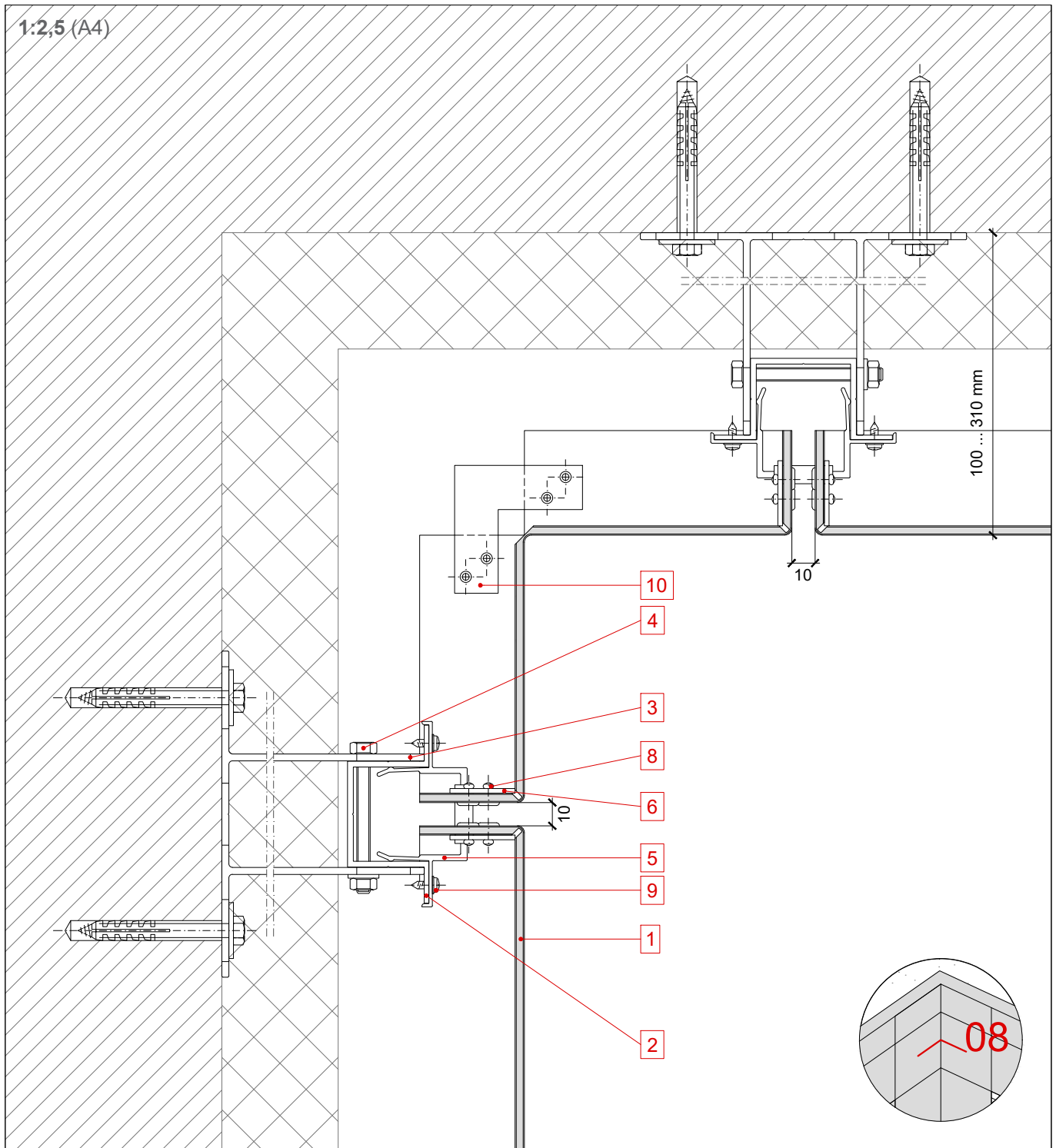
STAC BOND

CH45.08.01

Any unauthorised reproduction, distribution, public communication and/or transformation of this document constitutes a copyright violation.

STAC® is not responsible for its use which is, in any case, intended for evaluation by technically skilled persons, and it is subject to their own discretion and risk.

This information is for conceptual use only, and it may change.



1 STACBOND panel cassette

2 Profile OMEGA

3 Spacer DOUBLE T

4 Through screw M 6 x 60/70

5 Bracket set external

6 Cassettes forming plate

7 Stiffener from STACBOND panel

8 Blind rivet

9 Self-drilling screw

10 Aluminium plate for fixing and riveting

11 Auxiliar profile

12 Water drainage folded sheet

13 Water drainage holes

REV 08/18

SYSTEM STB-CH45

CONSTRUCTION DETAILS

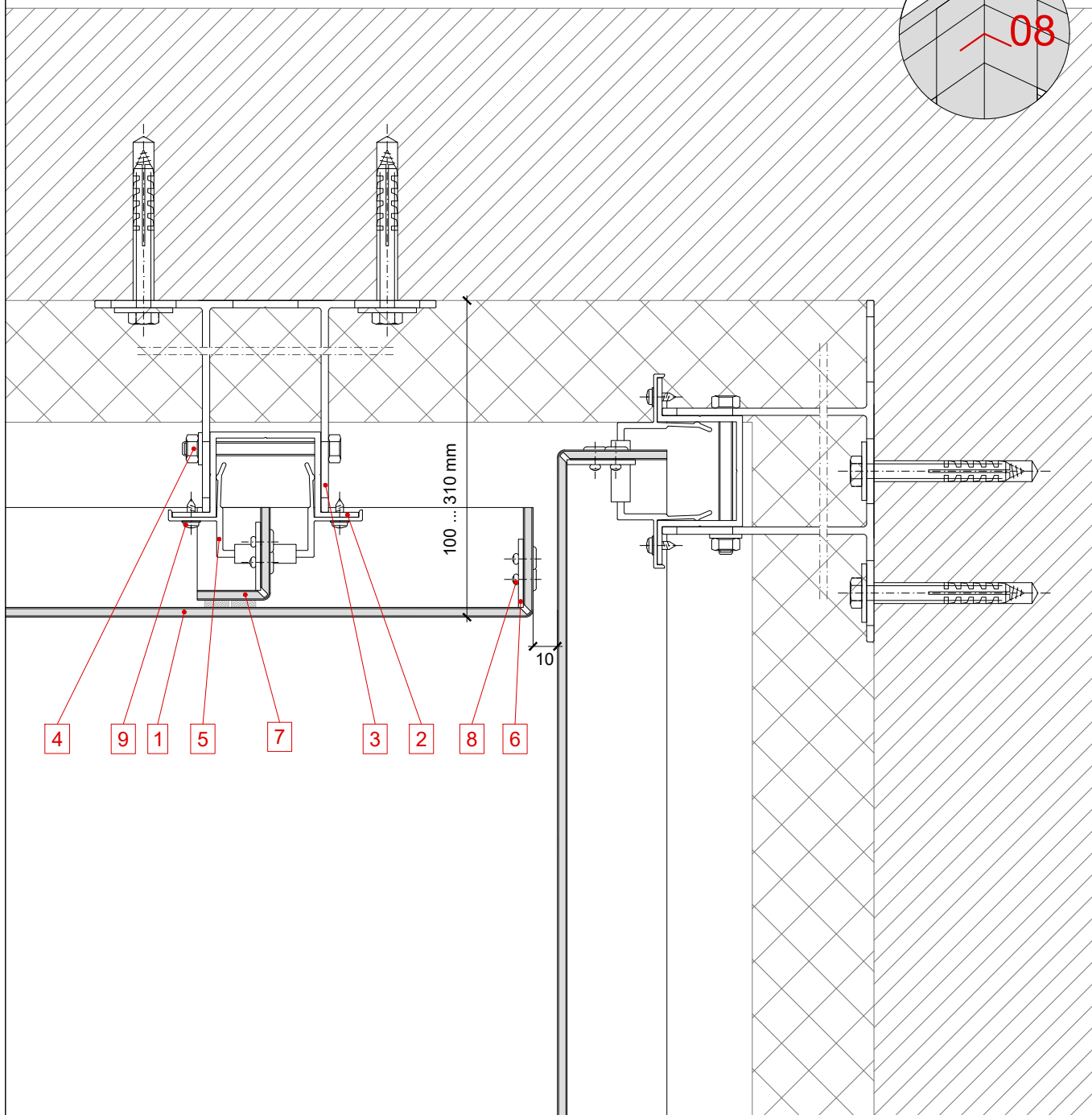
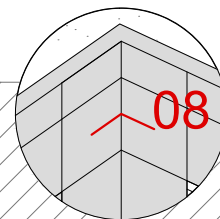
HORIZONTAL SECTION

ESQUINA INTERIOR

STAC BOND

CH45.08.02

1:2,5 (A4)



1 **STACBOND** panel cassette

2 Profile OMEGA

3 Spacer DOUBLE T

4 Through screw M 6 x 60/70

5 Bracket set external

6 Cassettes forming plate

7 Stiffener from STACBOND panel

8 Blind rivet

9 Self-drilling screw

10 Aluminium plate for fixing and riveting

11 Auxiliar profile

12 Water drainage folded sheet

13 Water drainage holes

REV 08/18

SYSTEM STB-CH45

CONSTRUCTION DETAILS

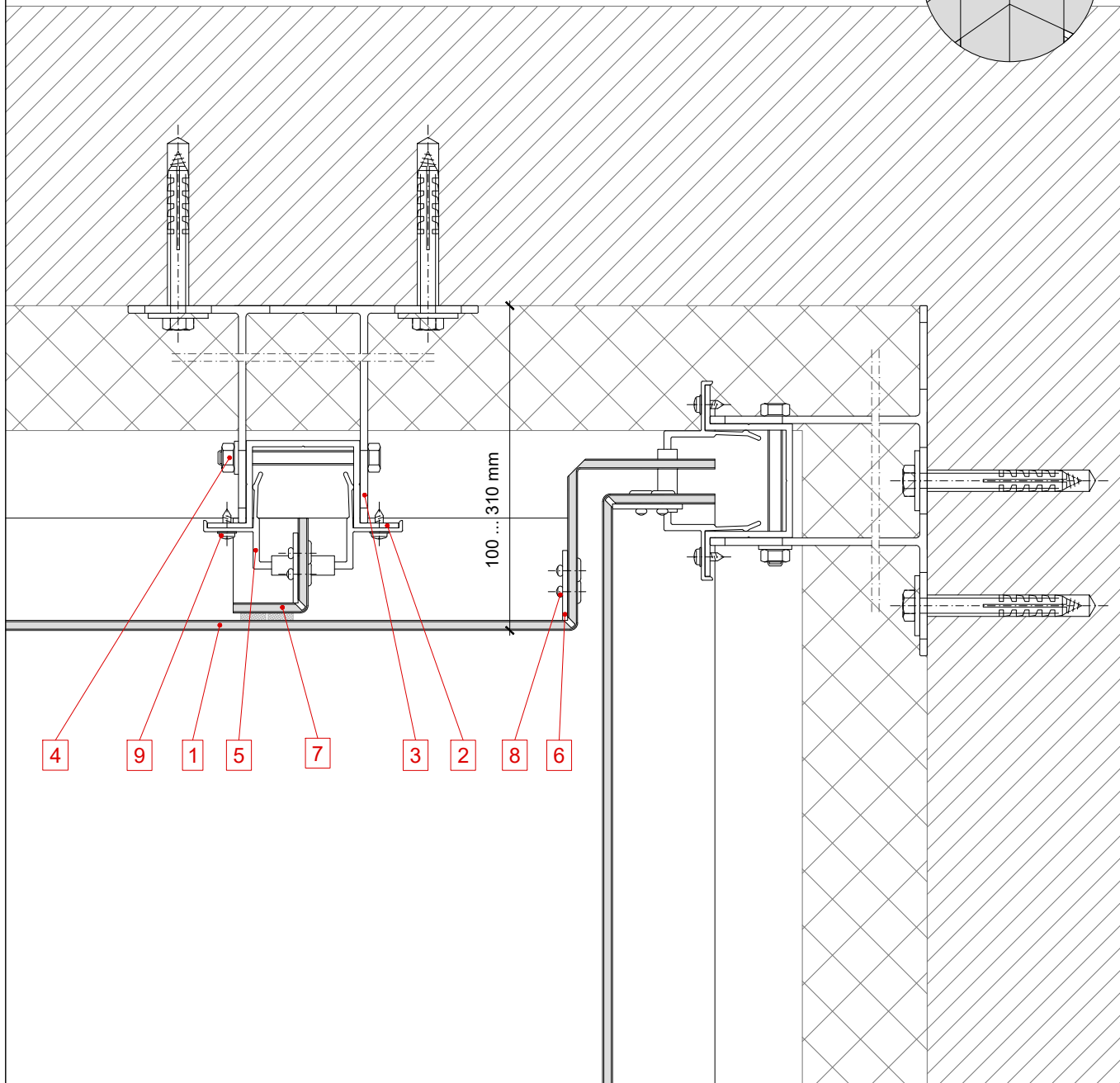
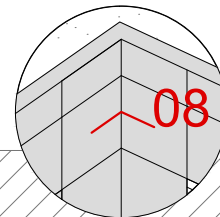
HORIZONTAL SECTION

INNER CORNER

STAC BOND

CH45.08.03

1:2,5 (A4)



1 STACBOND panel cassette

2 Profile OMEGA

3 Spacer DOUBLE T

4 Through screw M 6 x 60/70

5 Bracket set external

6 Cassettes forming plate

7 Stiffener from STACBOND panel

8 Blind rivet

9 Self-drilling screw

10 Aluminium plate for fixing and riveting

11 Auxiliar profile

12 Water drainage folded sheet

13 Water drainage holes

REV 08/18

SYSTEM STB-CH45

CONSTRUCTION DETAILS

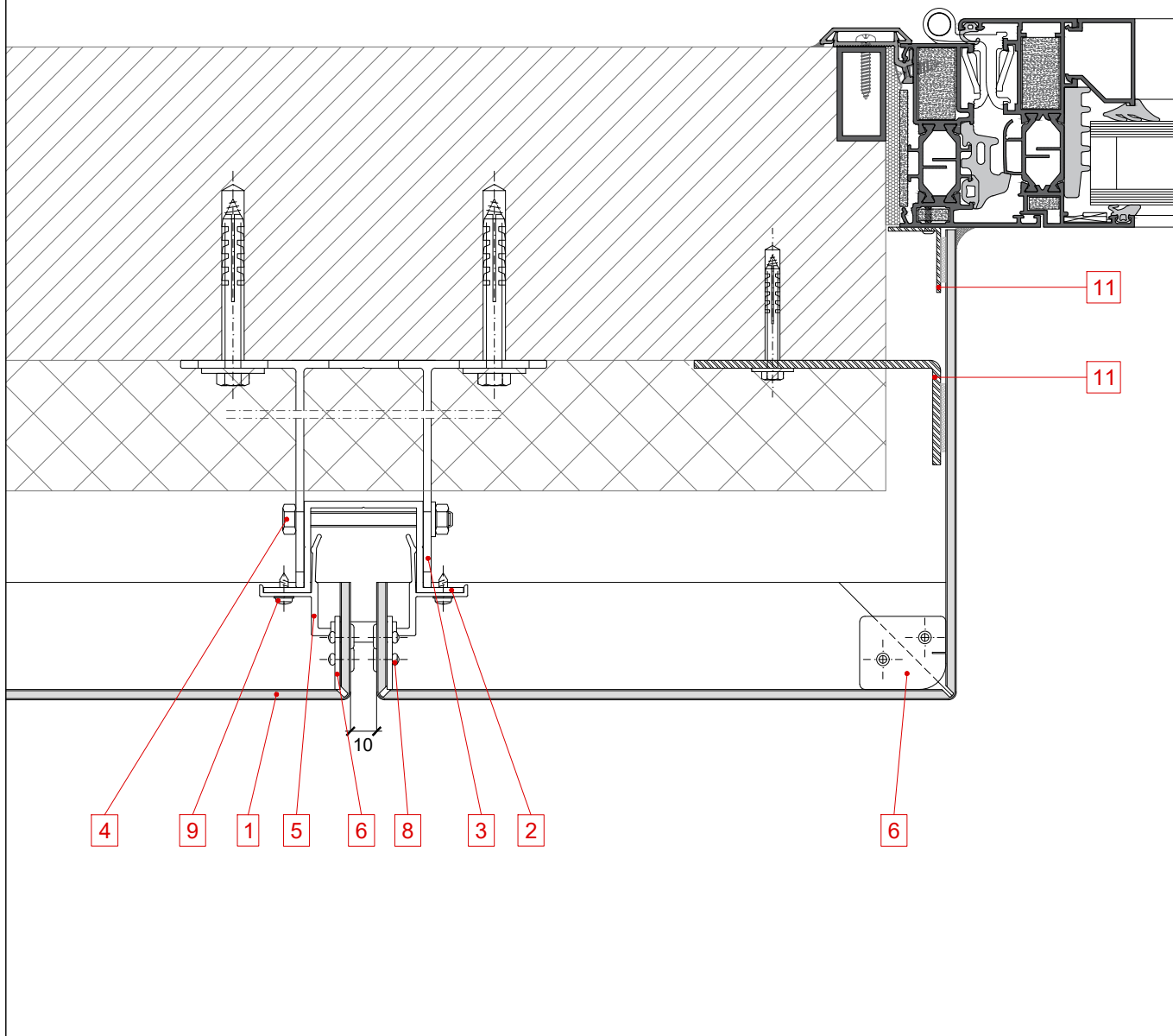
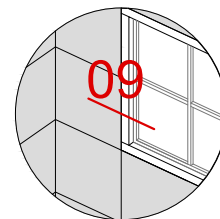
HORIZONTAL SECTION

WINDOWS JAMB

STAC BOND

CH45.09.01

1:2,5 (A4)



1 **STACBOND** panel cassette

2 Profile OMEGA

3 Spacer DOUBLE T

4 Through screw M 6 x 60/70

5 Bracket set external

6 Cassettes forming plate

7 Stiffener from STACBOND panel

8 Blind rivet

9 Self-drilling screw

10 Aluminium plate for fixing and riveting

11 Auxiliar profile

12 Water drainage folded sheet

13 Water drainage holes

REV 08/18

SYSTEM STB-CH45

CONSTRUCTION DETAILS
HORIZONTAL SECTION
ROUNDED CORNER

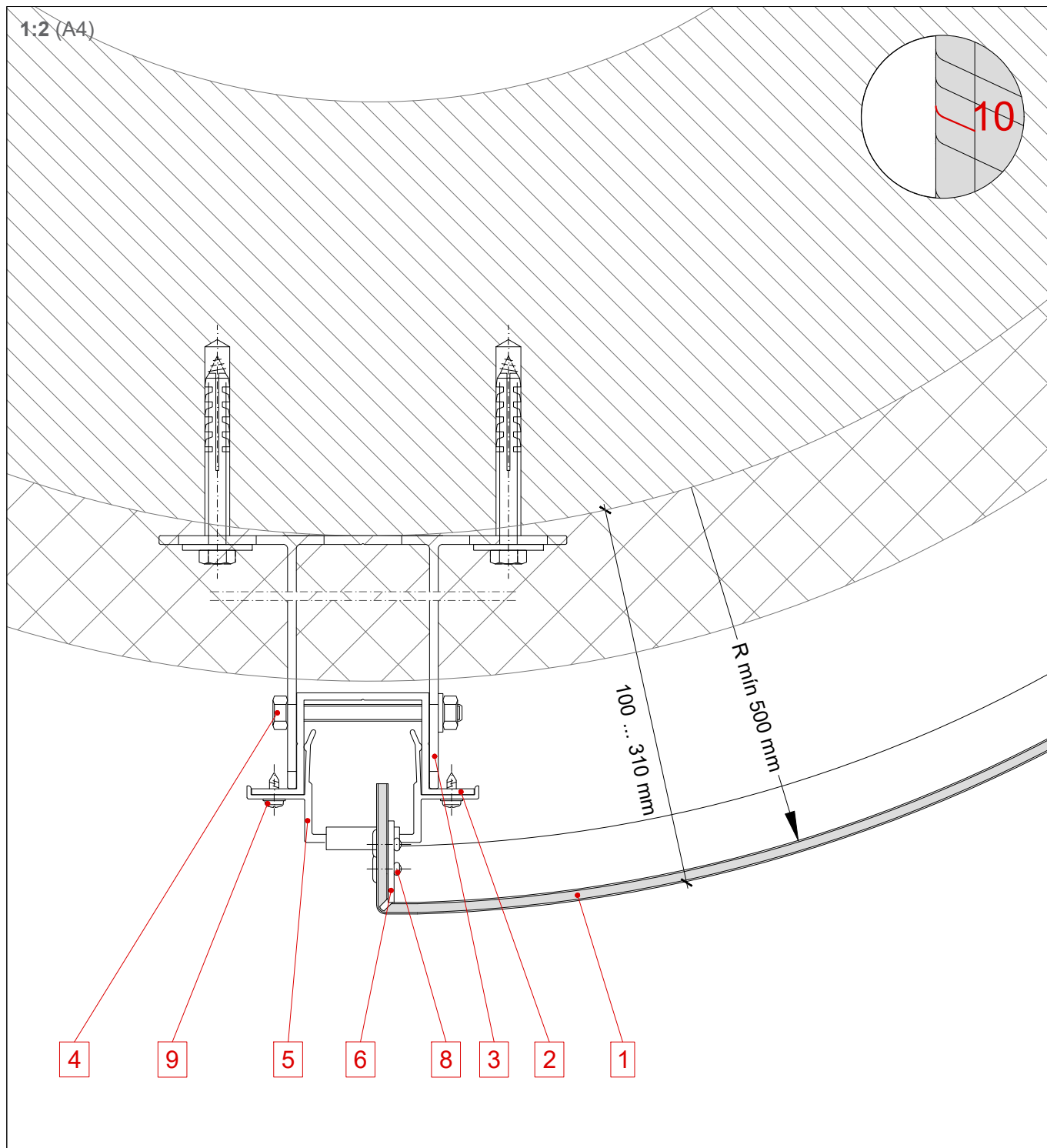
STAC BOND

CH45.10.01

Any unauthorised reproduction, distribution, public communication and/or transformation of this document constitutes a copyright violation.

STAC® is not responsible for its use which is, in any case, intended for evaluation by technically skilled persons, and it is subject to their own discretion and risk.

This information is for conceptual use only, and it may change.



1 STACBOND panel cassette

2 Profile OMEGA

3 Spacer DOUBLE T

4 Through screw M 6 x 60/70

5 Bracket set external

6 Cassettes forming plate

7 Stiffener from STACBOND panel

8 Blind rivet

9 Self-drilling screw

10 Aluminium plate for fixing and riveting

11 Auxiliar profile

12 Water drainage folded sheet

13 Water drainage holes

REV 08/18

SYSTEM STB-CH45

CONSTRUCTION DETAILS

VERTICAL SECTION

LATERAL CLADDING END

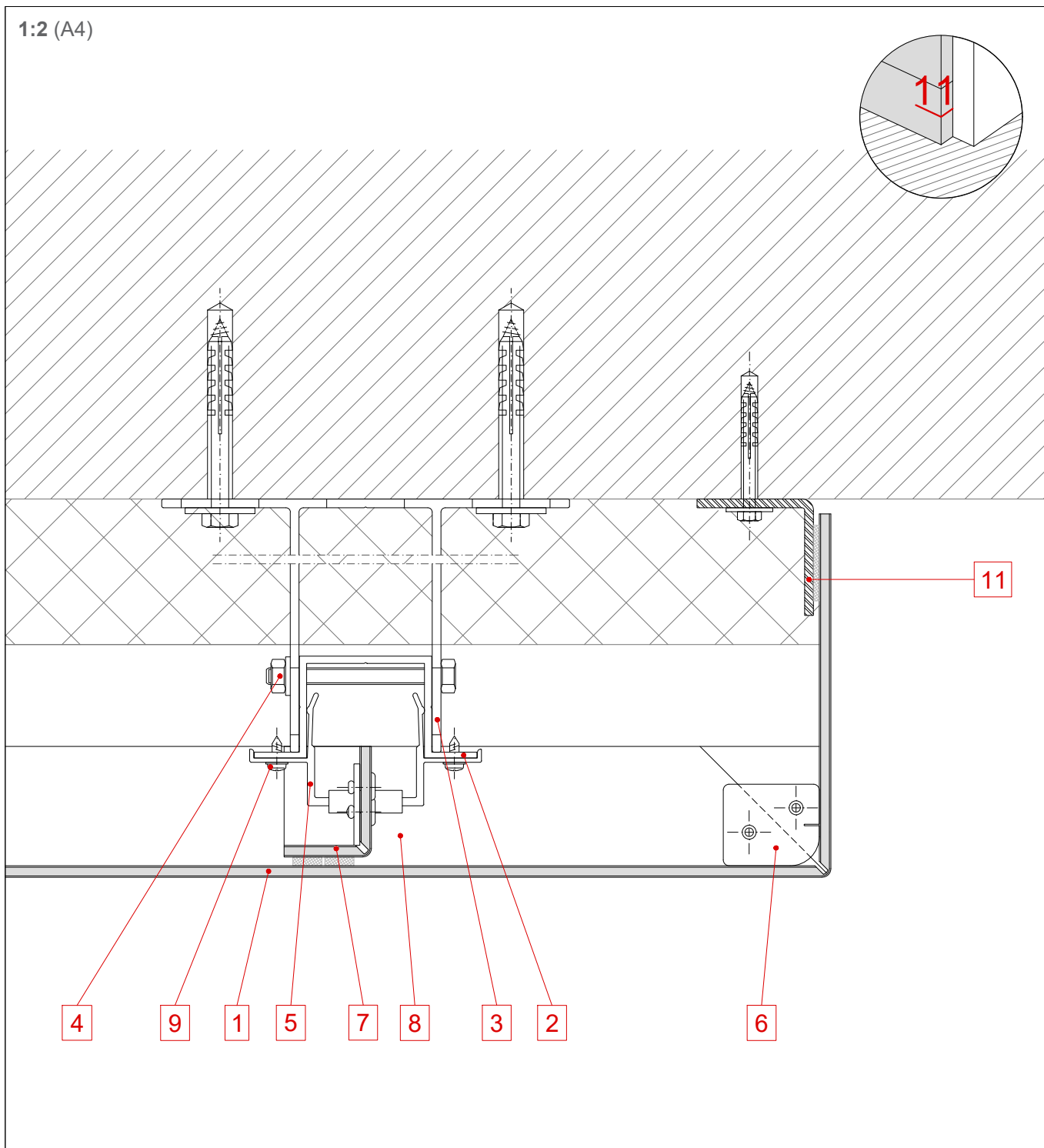
STAC BOND

CH45.11.01

Any unauthorised reproduction, distribution, public communication and/or transformation of this document constitutes a copyright violation.

STAC® is not responsible for its use which is, in any case, intended for evaluation by technically skilled persons, and it is subject to their own discretion and risk.

This information is for conceptual use only, and it may change.



1 **STACBOND** panel cassette

2 Profile OMEGA

3 Spacer DOUBLE T

4 Through screw M 6 x 60/70

5 Bracket set external

6 Cassettes forming plate

7 Stiffener from STACBOND panel

8 Blind rivet

9 Self-drilling screw

10 Aluminium plate for fixing and riveting

11 Auxiliar profile

12 Water drainage folded sheet

13 Water drainage holes

REV 08/18

SYSTEM STB-CH45

CONSTRUCTION DETAILS

VERTICAL SECTION

CEILING

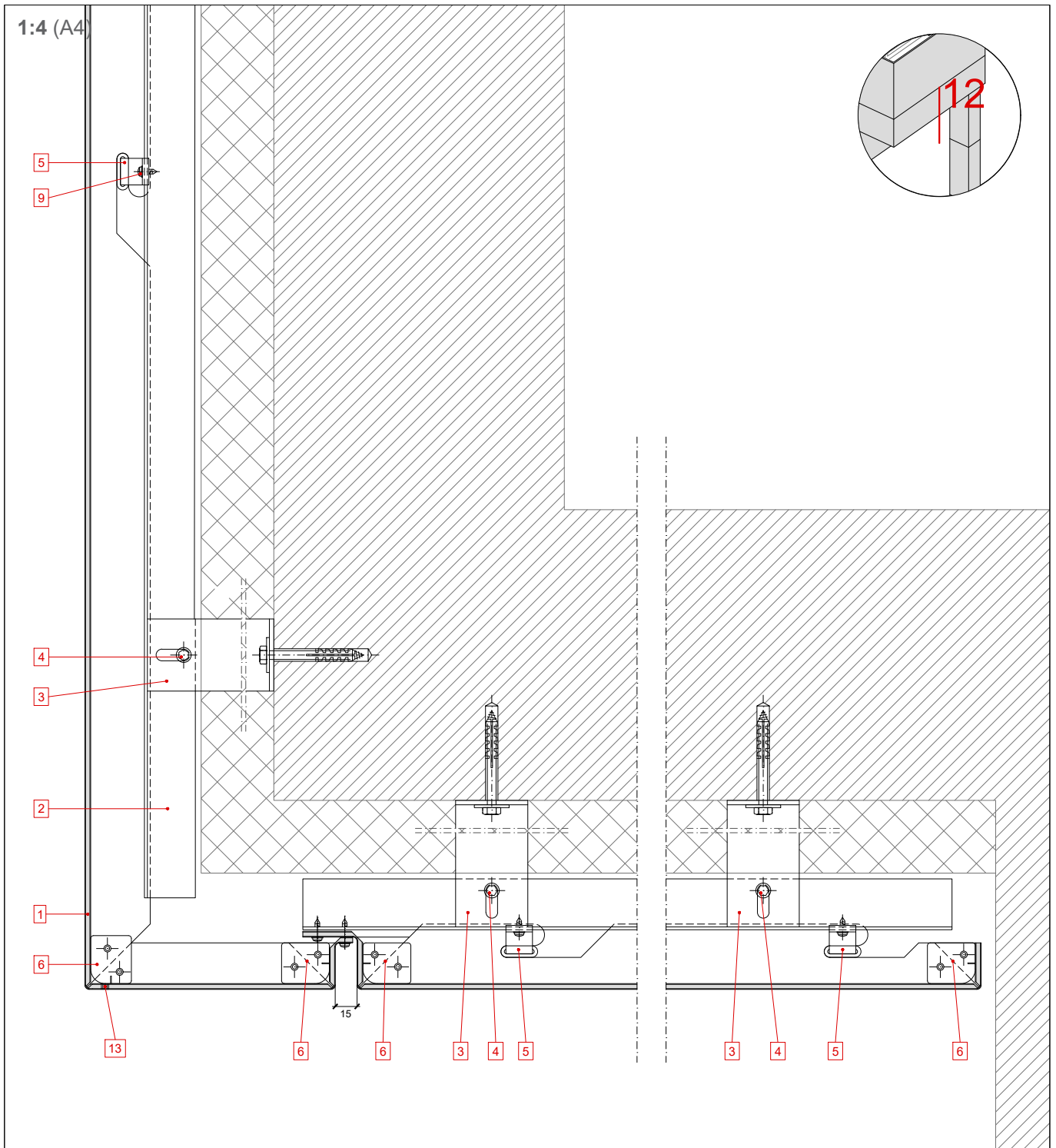
STAC BOND

CH45.12.01

Any unauthorised reproduction, distribution, public communication and/or transformation of this document constitutes a copyright violation.

STAC® is not responsible for its use which is, in any case, intended for evaluation by technically skilled persons, and it is subject to their own discretion and risk.

This information is for conceptual use only, and it may change.



1 STACBOND panel cassette

2 Profile OMEGA

3 Spacer DOUBLE T

4 Through screw M 6 x 60/70

5 Bracket set external

6 Cassettes forming plate

7 Stiffener from STACBOND panel

8 Blind rivet

9 Self-drilling screw

10 Aluminium plate for fixing and riveting

11 Auxiliar profile

12 Water drainage folded sheet

13 Water drainage holes

REV 08/18